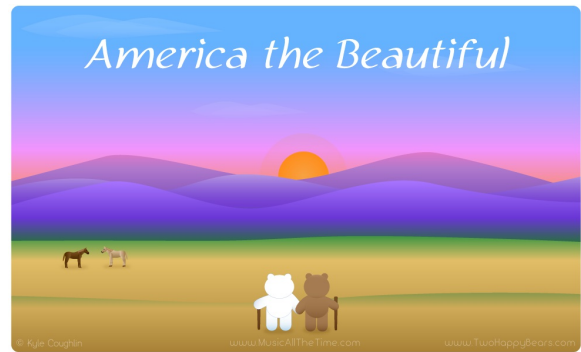


America the Beautiful

music by Samuel Augustus Ward

Piano Version 1



The first system of piano notation consists of two staves. The upper staff is in treble clef with a 4/4 time signature. It contains four measures of music: a quarter note G4, a dotted quarter note A4, an eighth note B4, a quarter note C5, a dotted quarter note D5, an eighth note E5, a quarter note F5, a dotted quarter note G5, an eighth note A5, a quarter note B5, a dotted quarter note C6, and a half note D6. The lower staff is in bass clef and contains four measures of whole rests.

The second system of piano notation consists of two staves. The upper staff continues the melody from the first system. It contains four measures: a dotted quarter note E5, an eighth note F5, a quarter note G5, a dotted quarter note A5, an eighth note B5, a quarter note C6, a dotted quarter note D6, an eighth note E6, a quarter note F6, a dotted quarter note G6, an eighth note A6, a quarter note B6, a dotted quarter note C7, and a half note D7. The lower staff contains four measures of whole rests.

The third system of piano notation consists of two staves. The upper staff continues the melody. It contains four measures: a dotted quarter note E6, an eighth note F6, a quarter note G6, a dotted quarter note A6, an eighth note B6, a quarter note C7, a dotted quarter note D7, an eighth note E7, a quarter note F7, a dotted quarter note G7, an eighth note A7, a quarter note B7, a dotted quarter note C8, and a half note D8. The lower staff contains four measures of whole rests.

The fourth system of piano notation consists of two staves. The upper staff continues the melody. It contains four measures: a dotted quarter note E7, an eighth note F7, a quarter note G7, a dotted quarter note A7, an eighth note B7, a quarter note C8, a dotted quarter note D8, an eighth note E8, a quarter note F8, a dotted quarter note G8, an eighth note A8, a quarter note B8, a dotted quarter note C9, and a half note D9. The lower staff contains four measures of whole rests, ending with a double bar line.

Piano arrangement by Kyle Coughlin