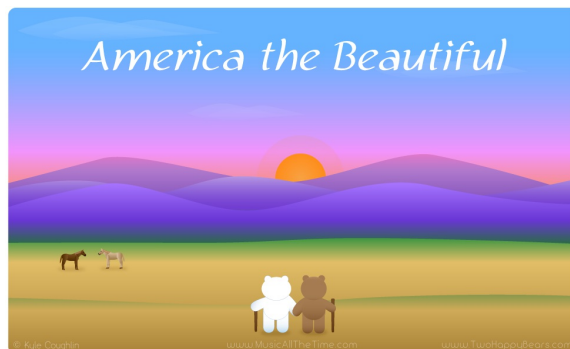


America the Beautiful

music by Samuel Augustus Ward

Piano Version 2



The first system of piano sheet music for 'America the Beautiful' is written in 4/4 time and B-flat major. It consists of two staves: a treble clef staff and a bass clef staff. The treble staff begins with a half note G4, followed by quarter notes A4 and Bb4, and a half note C5. The bass staff begins with a half note G2, followed by quarter notes A2 and Bb2, and a half note C3. The system concludes with a double bar line.

The second system of piano sheet music continues the melody. The treble staff has a half note C5, followed by quarter notes D5 and Eb5, and a half note F5. The bass staff has a half note C3, followed by quarter notes D3 and Eb3, and a half note F3. The system concludes with a double bar line.

The third system of piano sheet music continues the melody. The treble staff has a half note G5, followed by quarter notes A5 and Bb5, and a half note C6. The bass staff has a half note G2, followed by quarter notes A2 and Bb2, and a half note C3. The system concludes with a double bar line.

The fourth system of piano sheet music concludes the piece. The treble staff has a half note C6, followed by quarter notes Bb5 and A5, and a half note G5. The bass staff has a half note C3, followed by quarter notes Bb2 and A2, and a half note G2. The system concludes with a double bar line.

Piano arrangement by Kyle Coughlin