

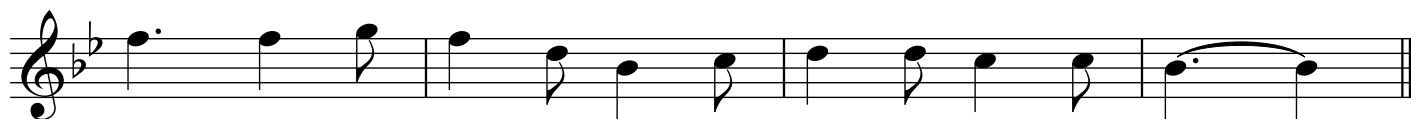
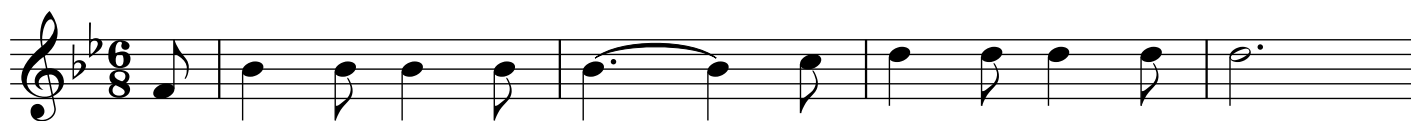
# The Farmer in the Dell

*in the key of B flat  
(concert E flat)*



*French horn arrangement  
by Kyle Coughlin*

*Nineteenth Century  
Traditional American*



[www.TwoHappyBears.com](http://www.TwoHappyBears.com)

[www.MusicAllTheTime.com](http://www.MusicAllTheTime.com)